
**TAPserver Quick
Reference Guide**



Version 0.3.702

**TAPserver, part of the TAPframework
project for Bauhaus-University Weimar,
chair computer science in architecture
Prof. Dr. D. Donath**

author: Hartmut Seichter, hartmut@technotecture.de

Index

1	Introduction	3
1.1	Information about TAPserver and TAPframework	3
1.2	Supported Platforms	3
1.3	Version Numbers	3
2	Installation	4
2.1	Installing on your System	4
2.2	Settings while installing	4
3	Control Window	5
3.1	Status Bar	5
3.2	Info Tab	5
3.3	Connections Tab	6
3.4	Logging Tab	6
3.5	Settings Tab	7
3.6	Control Buttons	7
4	Trayicon	7
4.1	Indications by the icon	7
4.2	Menu from Taskbar	8
5	Known Bugs	8
6	Thanks	8

1 Introduction

1.1 Information about TAPserver and TAPframework

TAPserver is a part of the TAPframework, a distributed virtual reality system. TAPserver is the distribution point for all applications within TAPframework. All connections are handled and bundled by this piece of software. TAPframework is a multiplatform, multithreaded, multipurpose API for developing virtual reality software for architects. The software is provided “as-is” and with sourcecode.

1.2 Supported Platforms

TAPserver is provided for windows:

- Windows 98,98SE,ME
- Windows NT 4.0
- Windows 2000/XP

as well for Linux

- Mandrake 8.0
- RedHat 6.2

Windows 95 and former versions and Windows NT 3.51 and former versions are not supported.

This Quick Reference Guide is based on the Windows version.

1.3 Version Numbers

Version numbers are provided as following.

major.minor.build

For example the version number 0.3.702 contains following information. The major number is less than 1. That means this program is beta or alpha. Release versions are 1.x.x. The minor number is less than 5, which means this program is alpha-state. Up from 5 it would be beta-state. The build-number shows the date of the program. 702 means July 2nd.

2 Installation

2.1 Installing on your system

Please use the latest version from the webpage:

<http://www.technotecture.de/projects/tap>

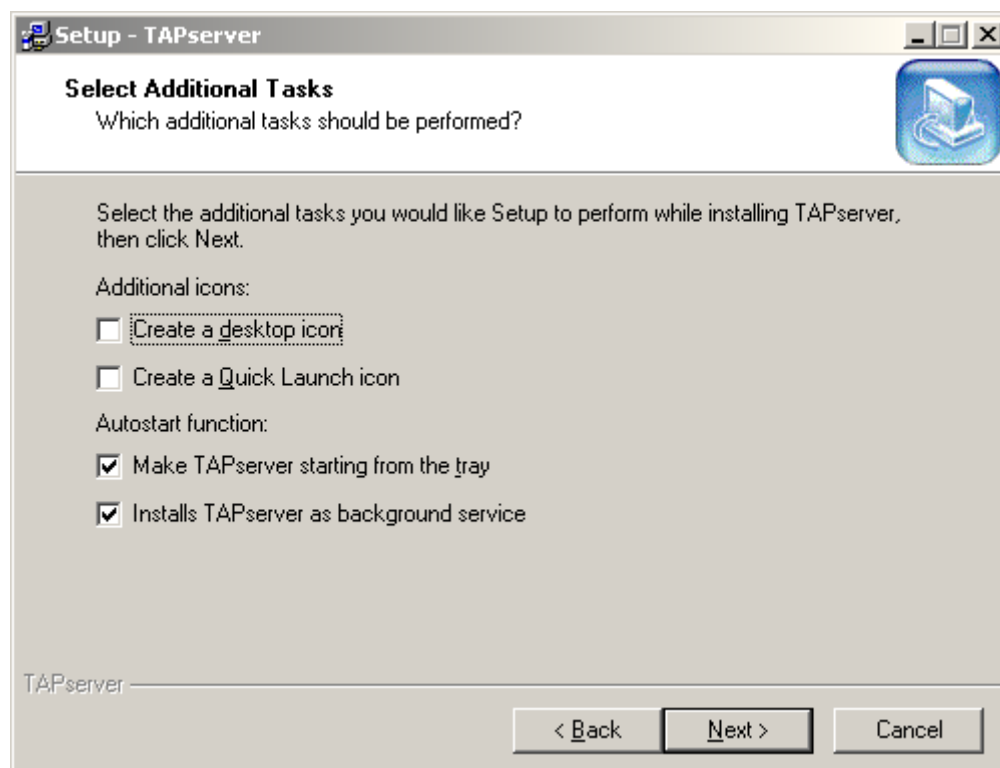
Normally you need only version 0.3. It is compatible to all following versions. Please use the installer to install TAPserver on your system. It is recommended because a lot of settings were made by the installer. Even on Linux you should use the installation program.

Attention:

- **Follow the instructions of the installation program!**
- **You have to be “root” (Linux) or “Administrator” (Win32) or user with special privileges on this system!**

2.2 Settings while installing TAPserver

The installer is asking you for “Additional Tasks”



You should keep these settings “as-is”.

“*Make TAPserver starting from tray*” – starts the TAPserver minimized. The main window doesn’t appear on the desktop.

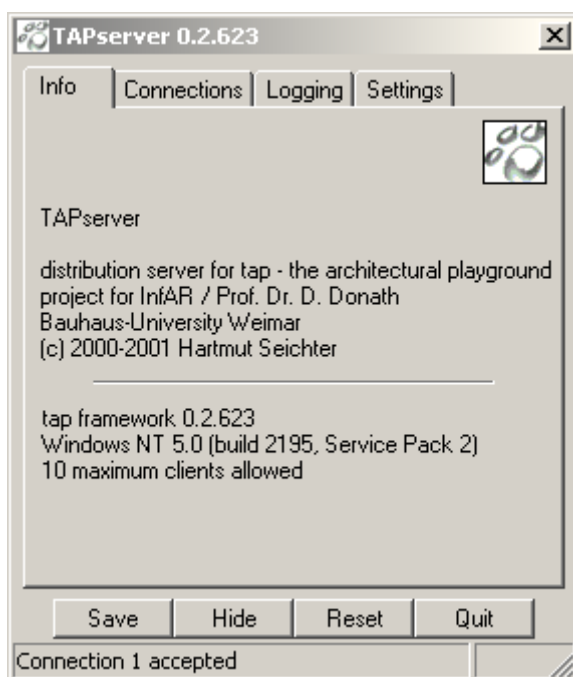
Installs TAPserver as background service – installs TAPserver as a background task. You have to be Administrator for this setting. A key in the registry will be made.

3 Control Window

3.1 Status Bar

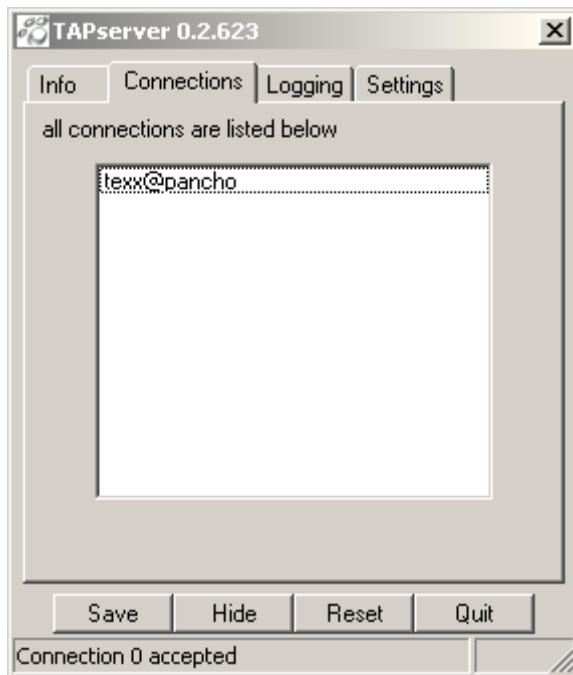
The statusbar shows the currently connected amount of clients.

3.2 Info-Tab



Here you get information about the version and your current system. There are also information about the number of clients which can be handled by this server. Normally this should be about 10.

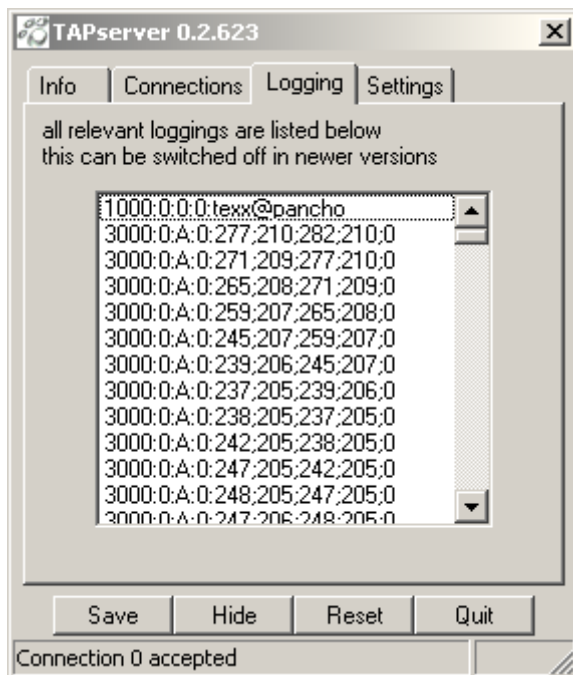
3.3 Connections-Tab



This Tab shows, which clients are connected with the server. The name is listed as

nickname@clientname

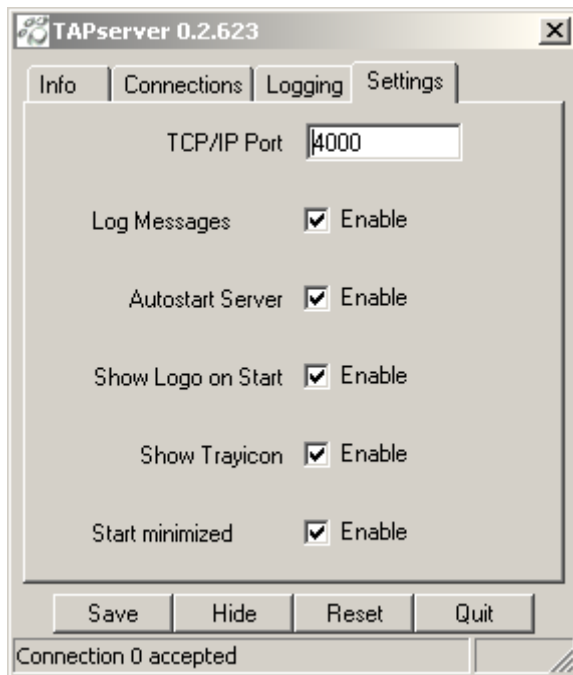
3.4 Logging-Tab



This Tab shows all messages that are handled by the TAPserver. This is only for debugging and can be switched of on the Settings-Tab (3.5).

It takes a lot of performance, so it is recommended to switch it of!

3.5 Settings-Tab



Here you can make the most tweaking of TAPserver.

- TCP/IP port: the port on which TAPserver waits for clients. Please be sure it is not in use. Consult your system- or network administrator.
- Autostart server: when Autostart server is checked, the server starts automatically listening on the given port.
- Show logo on start: if this is checked, a splashscreen appears on the desktop.
- Show trayicon: starts the server in the Windows-tray as small icon
- Start minimized: the control window doesn't appear on the desktop. You have to click twice on the trayicon.

3.6 Control Buttons

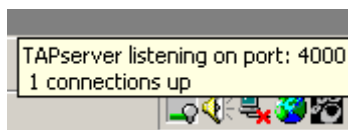
- Save: saves the current settings to INI-file or Registry (depends on your OS)
- Hide: hides the control window. Use trayicon for control
- Reset: disconnects all connected clients and resets the server
- Quit: quits the program and saves the settings

4 Trayicon

4.1 Indications by the icon

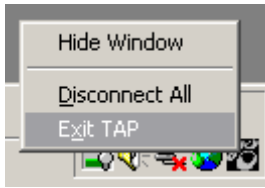


If your taskicon (the white paw) is looking like this, nobody is connected.



If your taskicon is switched to black, the server is up and somebody is connected. If you move your mousecursor over the icon the information-tooltip appears.

4.2 Menu from Taskbar



If you make a right-click on the trayicon (black or white paw) TAPserver shows a minimal menu:

- Hide/Show Window: hides or shows the control window
- Disconnect all: resets the server and disconnects all connected clients
- Exit TAP: quits TAPserver

5 Known Bugs

TAPserver is still in alpha state. So sometimes it will crash. Please report those crashes to the TAPbugtracker:

<http://www.technotecture.de/projects/tap/bug.html>

6. Thanks

Go to the chair of computer science in architecture, Prof. Dr. D. Donath, MSc CAAD T. Lömker, the www.igroup.org, Marc Aurel Schnabel from HKU, my girlfriend Linda and all this courageous people who tested this piece of wacky code.

The Author:
Hartmut Seichter